

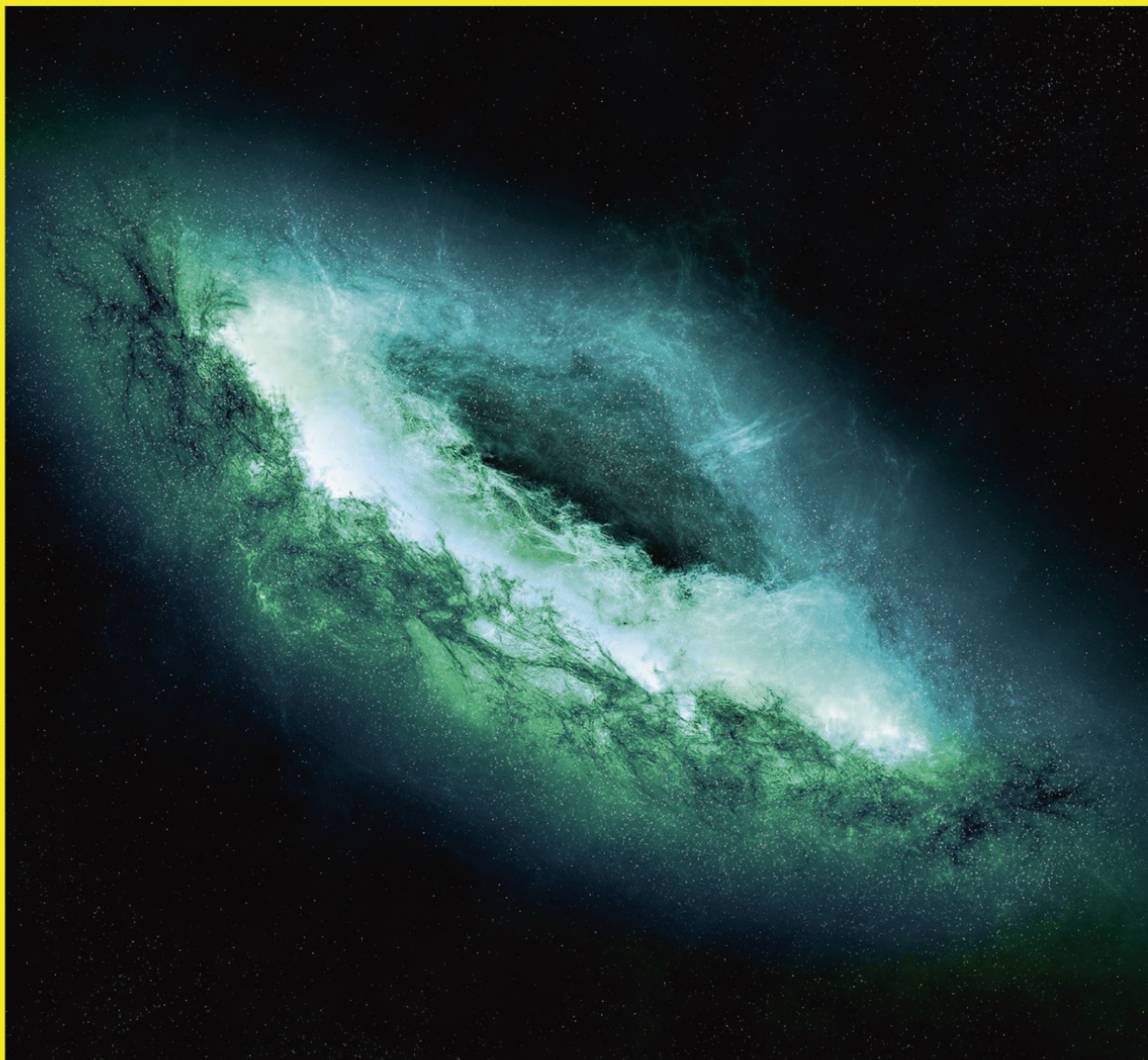


**Sky-Watcher®**

*Be amazed.*

  
Galaxy Scientific  
[www.Astro.hk](http://www.Astro.hk)





**YOUR CHOICE IS  
BACKED BY AUTHORITY!**

[www.SkyWatcher.com](http://www.SkyWatcher.com)





# Mounts

AZ Mounts & EQ Mounts<sup>04</sup>

EQ Synscan Mounts<sup>05</sup>

# OTA

Achromatic Refractors<sup>06</sup>

Parabolic Newtonian Reflectors<sup>07</sup>

# TELESCOPES

AZ Series<sup>08</sup>

Equatorial Series<sup>09 12</sup>

Dobsonians<sup>13 15</sup>

# ACCESSORIES

Synscan Tour<sup>16 17</sup>

Synguider & Guidscope Mount<sup>17</sup>

Eyepieces<sup>18 19</sup>

Finderscopes<sup>19 20</sup>

Motors<sup>22</sup>

Binocular Viewer<sup>23</sup>

# Contents



## 01 AZ MOUNTS

Sky-Watcher offers a premium grab-and-go Alt-Azimuth style mount that matches the quality, performance and appeal of our renowned Equinox apochromatic refractors. The mount is 100% machined aluminum and features buttery smooth motion on both axes. It comes with a heavy-duty 1.75" steel-legged tripod as standard – something competitive models charge extra for. It can carry two telescopes simultaneously, or a telescope on one side and a counterweight on the other.

The HDAZ mount is excellent for daytime use. Its extremely smooth motion control is a delight whether you are following a deer walking through the woods or a celestial target at high magnification.

The much anticipated Sky-Watcher AZ4 Alt-Azimuth mount is set to be a hit with astronomers and terrestrial observers alike. The design features separate clutches on both the Altitude and Azimuth axes and a panning arm, which can be fixed in two separate positions. The movements are buttery-smooth and telescopes can be manipulated with effortless precision. Available in two versions: 1) With lightweight aluminium legs for optimum portability, and 2) With 1.75" stainless steel legs for maximum strength and stability. Maximum recommended payload: Sky-Watcher D150/F1200 Reflector.



HDAZ

AZ4

## 02 EQ MOUNTS

The equatorial mount is the most versatile telescope platform ever designed. Without question it is the most popular and utilized mounting system favored by amateur astronomers today worldwide. The elegantly appointed equatorial bodies are cast from virgin aluminum and powder coated in white or black. Setting-circles are provided in both RA and Dec. axes. The counterweight shaft is made from solid stainless steel. The provided counterweights are cast iron, powder coated black.

Equatorial mounts usually come as German equatorial or fork mounts. For alignment with the polar axis, both types of mount are set at an angle equal to the observer's latitude and pointed at the celestial pole (fork mount designs require an accessory wedge to accomplish this). German Equatorial Mounts accomplish this easily by means adjustment screws. Movement around the polar axis is movement in Right Ascension (RA). Movement around the second axis is in Declination, so it is called the Dec axis. To track the motion of the sky a motor is added to the RA axis. The motor counteracts the rotation of the earth to keep celestial objects centered in the eyepiece of the telescope.

A second drive can be added to give declination control which is very useful for doing astrophotography. Hand controls with directional buttons are used to direct the motors. Setting circles are included as part of many equatorial mounts. When the mount is correctly polar aligned and the circles aligned using known stars, they can be an aid in locating astronomical objects. They allow the user to go to predetermined RA and Dec positions.



EQ3

EQ5



# 03

## EQ SYNSCAN MOUNTS



The hand control is upgradable to SynScan Tour

The Sky-Watcher SynScan-Series Equatorial mounts are premium-grade observing platforms utilizing quality mechanical and electronic platforms utilizing quality mechanical and electronic component materials throughout:

### Computer Operation

Sky-Watcher SynScan-Series Equatorial mounts include the revolutionary SynScan Computer Controller. Astronomical object locating has never been easier or more fun. The telescope responds instantly to keypad commands at the touch of a fingertip. The SynScan-Series mounts can also be controlled remotely by PC using popular planetarium software via a RS232 connection on the hand-controller. There is even a GPS upgrade option to facilitate entering precise time, date, and location. Synscan firmware is upgradeable via internet download.

### Motors, Gears & Bearings

The SynScan-Series models utilize high-torque DC stepper motors and micro-stepping driving technology yielding high resolution. Bronze-metal worm-gear control systems enable precise, incremental mechanical movement with minimal gear backlash.

### Motor Speeds and Tracking Modes

The operating versatility of SynScan provides various guiding and slewing speeds. Tracking modes offer Lunar, Solar and Sidereal rates. Mount is compatible with operations in both the Northern and Southern hemispheres.

### Database

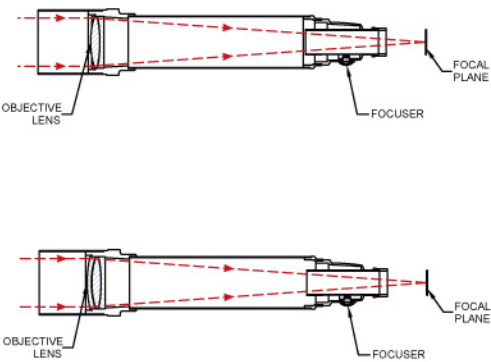
The SynScan computer includes a celestial database of over 40,000 objects. The library includes objects for advanced studies cataloged within the CNGC, IC, Caldwell, and other lists, plus 25 user-defined celestial favorites.

### Astrophotography

Sky imagers will appreciate the auto-guider port for guiding using a PC. SynScan firmware includes a programming algorithm for periodic error correction (such error is common to all worm-gears). In addition, programming is provided for R.A. and Dec. worm-gear backlash compensation to keep slewing and tracking response prompt and uniform.

MOUNT						
MODEL	HDAZ	AZ4	EQ3	EQ5	HEQ5 SYNSCAN	EQ6 SYNSCAN
Mount Type	Alt-azimuth	Alt-azimuth	Equatorial	Equatorial	Equatorial	Equatorial
Telescope Mounting	1.75" Dovetail	1.75" Dovetail	1.75" Dovetail	1.75" Dovetail	1.75" Dovetail	1.75" Dovetail
Slow-motion Control	No	No	RA & Dec	RA & Dec	RA & Dec	RA & Dec
Hand Control	No	No	No	No	EQ SynScan hand control	EQ SynScan hand control
Piggyback Bracket	No	No	Yes	Yes	Yes	Yes
Accessory Tray	Yes	Yes	Yes	Yes	Yes	Yes
Motor Drive	No	No	Optional	Optional	Stepper Motor	Stepper Motor
Tripod;Adjustable Length	1.75" Stainless steel;630mm-1150mm Aluminum;700mm-1250mm(Optional)	1.75" Stainless steel;630mm-1150mm Aluminum;700mm-1250mm(Optional)	1.75" Stainless steel;750mm-1270mm Aluminum;700mm-1250mm(Optional)	1.75" Stainless steel; 750mm-1270mm	1.75" Stainless steel; 750mm-1270mm	2" Stainless steel; 750mm-1270mm
Mount Weight	3.32kg	2.94kg	4.13kg	5.71kg	10.22kg	16.63kg
Mount+Tripod Weight	8.02kg / 5.73kg	7.64/5.35kg	8.83kg / 6.54kg	10.41kg	14.92kg	24.13kg
Counterweight(s)	\	\	3.42kg / 1.8kg	2*5.1kg	2*5.1kg	2*5.1kg





Type

**Achromatic Refractor**  
The classic refractor bends the light rays by passing them through a doublet lens with elements made of crown and flint glass and have ground, polished surfaces.

**Apochromatic Refractor**  
To eliminate chromatic aberration, such telescopes use doublet or triplet lens with one element made of extra-low dispersion (ED) glass.

Advantages

Enclosed optical tube protects optics;  
Durable and virtually maintenance-free for decades;  
Don't require routine collimation;  
Form high contrast and fine resolution images with no central obstruction;  
Excellent for lunar, planetary and binary star viewing especially larger apertures;  
Apochromatic refractor produces a very crisp image that is virtually free of false color

Disadvantages

More expensive, heavier, longer and bulkier than other equivalent aperture telescope designs;  
Lens that are too large will sag due to gravity, distorting the image it produces, which limits the practical maximum lens size to smaller aperture;  
Some false color in achromatic designs



High quality SKY-WATCHER products represent the cooperation of Synta, a leading producer of telescopes for amateur astronomy, with the world-renowned optical glass developer and manufacturer SCHOTT.  
  
The seamless cooperation between the leaders of two industries guarantees breathtakingly pristine celestial views for the amateur astronomers.



BKED80



BKED120



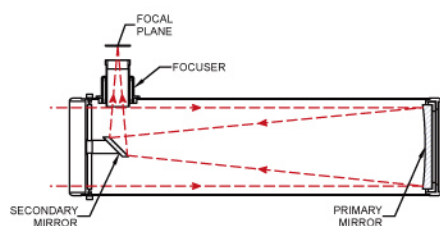
BK1021



BK1201

REFRACTOR				
MODEL	BK1021		BK1201	
	Achromatic Refractor		Apochromatic Refractor	
Optical Design				
Clear Aperture	102mm		120mm	
Focal Length;F/Ratio	1000mm;f/9.8		1000mm;f/8.3	
Maximum Practical Power	204x		240x	
Limiting Stellar Magnitude	12.1		12.5	
Resolving Power	1.18 arc sec		1 arc sec	
Eyepiece Holder Diameter	2"(With a 1.25" adapter)		2"(With a 1.25" adapter)	
Dimension(DxL);Weight	116 x 1010mm;3.76kg		149 x 1000mm;4.87kg	
Eyepiece	super10 & super25		super10 & super25	
Finder Scope	6 x 30		6 x 30	
			BKED80	BKED120
			80mm	120mm
			600mm;f/7.5	900mm;f/7.5
			160x	240x
			11.6	12.5
			1.5 arc sec	1 arc sec
			2"(With a 1.25" adapter)	2"(With a 1.25" adapter)
			116 x 580mm;3.21kg	143 x 796mm;4.93kg
			LE28T	LE28T
			8 x 50	8 x 50





### Type

#### Newtonian Reflector

A Newtonian reflector reflects the light rays off of the surface of a curved mirror which is coated with a reflecting material.

### Advantages

Reasonably compact and portable up to focal lengths of 1,000mm;  
Free of false color;  
Excellent for viewing nebulae, remote galaxies and globular star clusters;  
Also good for solar, planetary and lunar viewing;  
Perform superbly on deep sky astrophotography

### Disadvantages

Generally not suitable for viewing terrestrial subjects;  
Require more care and maintenance and occasional adjustment of their mirror alignment;  
Minute loss of light due to secondary (diagonal) obstruction



BKP150750



BKP2001



BKP25012

## PARABOLIC NEWTONIAN REFLECTOR

MODEL	BKP150750	BKP2001	BKP25012
Optical Design		Parabolic Newtonian Reflector	
Clear Aperture	150mm	200mm	250mm
Focal Length;F/Ratio	750mm;f/5	1000mm;f/5	1200mm;f/4.8
Maximum Practical Power	300x	400x	500x
Limiting Stellar Magnitude	13	13.6	14.1
Resolving Power	0.8 arc sec	0.6 arc sec	0.48 arc sec
Eyepiece Holder Diameter	1.25"/2"(With a 1.25" adapter)	2"(With a 1.25" adapter)	2"(With a 1.25" adapter)
Dimension(DxL);Weight	182 x 690mm;5.59kg	240 x 920mm;8.75kg	288 x 1120mm;14.38kg
Eyepiece	super10 & super25	SP10 & SP26	SP10 & SP26
Finder Scope	6 x 30	8 x 50	8 x 50



## AZ SERIES



**BK767AZ1**



**BK707AZ2**



**BK705AZ3**

TELESCOPES			
MODEL	BK767 AZ1	BK707 AZ2	BK705 AZ3
Optical Design	Achromatic Refractor	Achromatic Refractor	Achromatic Refractor
Clear Aperture	76mm	70mm	70mm
Focal Length;F/Ratio	700mm;f/9.2	700mm;f/10	500mm;f/7
Maximum Practical Power	152x	140x	140x
Limiting Stellar Magnitude	12	11.3	11.9
Resolving Power	1.5 arc sec	1.71 arc sec	1.65 arc sec
Eyepiece Holder Diameter	1.25"	1.25"	1.25"
Tube Dimension (DxL)	125mm x 685mm;1.76kg	70mm x 665mm;1.45kg	70mm x 480mm;1.05kg
Eyepiece	SUPER10 & SUPER 25	SUPER10 & SUPER 25	SUPER10 & SUPER 25
Finder Scope	6 x 24	6 x 24	6 x 24
Mount	AZ1	AZ2	AZ3
Tripod;Adjustable Length	Aluminum;650mm-1200mm	Aluminum;650mm-1200mm	Aluminum;700mm-1250mm
Hand Control	\	\	\

# EQUATORIAL SERIES

## EQ1 & EQ2


**BK1025AZGT**

**BK709EQ1**

**BK909EQ2**

TELESOPES			
MODEL	BK1025 AZGT/AUTO-TRACKING	BK709 EQ1	BK909 EQ2
Optical Design	Achromatic Refractor	Achromatic Refractor	Achromatic Refractor
Clear Aperture	102mm	70mm	90mm
Focal Length;F/Ratio	500mm;f/4.9	900mm;f/13	900mm;f/10
Maximum Practical Power	204x	180x	180x
Limiting Stellar Magnitude	12.1	11.9	11.9
Resolving Power	1.18 arc sec	1.65 arc sec	1.33 arc sec
Eyepiece Holder Diameter	2"(With a 1.25" adapter)	1.25"	1.25"
Tube Dimension (DxL)	116mm x 530mm;2.61kg	70mm x 665mm;1.68kg	105mm x 880mm;2.07kg
Eyepiece	SUPER10 & SUPER 20	SUPER10 & SUPER 25	SUPER10 & SUPER 25
Finder Scope	6 x 30	6 x 24	6 x 30
Mount	AZ 80 GT	EQ1	EQ2
Tripod;Adjustable Length	Aluminum;650mm-1200mm	Aluminum;650mm-1200mm	Aluminum;700mm-1250mm
Hand Control	AZ SynScan(GoTo) / Auto-Tracking	\	\



# TELESCOPES



**BKMAK90EQ1**



**BKP1149EQ1**



**BKP130650EQ2**

TELESCOPES			
MODEL	BKMAK90 EQ1	BKP1149 EQ1	BKP130650 EQ2
Optical Design	Maksutov-Cassegrain	Newtonian Reflector	Parabolic Newtonian Reflector
Clear Aperture	90mm	114mm	130mm
Focal Length;F/Ratio	1250mm;f/13.9	900mm;f/7.9	650mm;f/5
Maximum Practical Power	180x	228x	260x
Limiting Stellar Magnitude	11.9	12.4	12.7
Resolving Power	1.33 arc sec	1.05 arc sec	0.92 arc sec
Eyeiece Holder Diameter	1.25"	1.25"	1.25"/2" (With a 1.25" adapter)
Tube Dimension (DxL)	100mm x 240mm;1.37kg	145mm x 900mm;2.51kg	160mm x 615mm;3.66kg
Eyeiece	SUPER10 & SUPER 25	SUPER10 & SUPER 25	SUPER10 & SUPER 25
Finder Scope	Red Dot Finder	5x	Red Dot Finder
Mount	EQ1	EQ1	EQ2
Tripod;Adjustable Length	Aluminum;650mm-1200mm	Aluminum;700mm-1250mm	Aluminum;700mm-1250mm
Hand Control	\	\	\

# EQ3 & EQ5



**BK1021EQ3**



**BK1201EQ5**



**BKMAK127EQ3**

TELESOPES			
MODEL	BK1021 EQ3(Steel Tripod)	BK1201EQ5	BKMAK127EQ3(Steel Tripod)
Optical Design	Achromatic Refractor	Achromatic Refractor	Maksutov-Cassegrain
Clear Aperture	102mm	120mm	127mm
Focal Length;F/Ratio	1000mm;f/9.8	1000mm;f/8.3	1500mm;f/11.8
Maximum Practical Power	204x	240x	254x
Limiting Stellar Magnitude	12.1	12.5	12.6
Resolving Power	1.18 arc sec	1 arc sec	0.94 arc sec
Eyepiece Holder Diameter	2"(With a 1.25" adapter)	2"(With a 1.25" adapter)	1.25"/2"(With a 1.25" adapter)
Tube Dimension (DxL)	116mm x 1010mm;3.76kg	149mm x 1000mm;4.87kg	143mm x 370mm;3.3kg
Eyepiece	SP10 & SP26	SP10 & SP26	PL10 & PL26
Finder Scope	6x30	6x30	Red Dot Finder
Mount	EQ3	EQ5	EQ3
Tripod;Adjustable Length	Steel;840mm-1170mm Aluminum;700mm-1250mm(Optional)	Steel;840mm-1170mm	Steel;840mm-1170mm Aluminum;700mm-1250mm(Optional)
Hand Control	\	\	\



## GO-TO EQUATORIAL SERIES



**BKP150750EQ3**



**BKP2001EQ5  
SYNSCAN**



**BKP25012EQ6  
SYNSCAN**

TELESCOPES			
MODEL	BKP150750 EQ3(Steel Tripod)	BKP2001EQ5 SYNSCAN	BKP25012EQ6 SYNSCAN
Optical Design	Parabolic Newtonian Reflector	Parabolic Newtonian Reflector	Parabolic Newtonian Reflector
Clear Aperture	150mm	200mm	250mm
Focal Length;F/Ratio	750mm;f/5	1000mm;f/5	1200mm;f/4.8
Maximum Practical Power	300x	400x	500x
Limiting Stellar Magnitude	13	13.6	14.1
Resolving Power	0.8 arc sec	0.6 arc sec	0.48 arc sec
Eyepiece Holder Diameter	1.25"/2"(With a 1.25" adapter)	2"(With a 1.25" adapter)	2"(With a 1.25" adapter)
Tube Dimension (DxL)	182mm x 690mm;5.59kg	240mm x 900mm;9.1kg	288mm x 1120mm;14.38kg
Eyepiece	SUPER10 & SUPER 25	SUPER10 & SUPER 25	SP10 & SP26
Finder Scope	6x30	8x50	8x50
Mount	EQ3	EQ5 SynScan	EQ6 SynScan
Tripod;Adjustable Length	Steel;840mm-1170mm Aluminum;700mm-1250mm(Optional)	Steel; 840mm-1170mm	Steel;750mm-1270mm
Hand Control	\	EQ SYNSCAN	EQ SYNSCAN

# TRADITIONAL DOBSONIANS


**DOB 8**

**DOB 10**

**DOB12**

TELESOPES			
MODEL	DOB 8	DOB 10	DOB 12
Optical Design	Parabolic Newtonian Reflector	Parabolic Newtonian Reflector	Parabolic Newtonian Reflector
Clear Aperture	203mm	254mm	305mm
Focal Length;F/Ratio	1200mm;f/5.9	1200mm;f/4.7	1500mm;f/4.9
Maximum Practical Power	406x	508x	610x
Limiting Stellar Magnitude	13.6	14.1	14.5
Resolving Power	0.59 arc sec	0.47 arc sec	0.39 arc sec
Eyepiece Holder Diameter	2"(With a 1.25" adapter)	2"(With a 1.25" adapter)	2"(With a 1.25" adapter)
Tube Dimension (DxL)	238mm x (835mm-1115mm);11kg	380mm x (800mm-1120mm);15kg	450mm x (920mm-1400mm);21kg
Eyepiece	SP10 & SP26	SP10 & SP26	SP10 & SP26
Finder Scope	8x50	8x50	8x50
Mount	Dobsonian 8"	Dobsonian 10"	Dobsonian 12"
Hand Control	\	\	\



## COLLAPSIBLE DOBSONIANS



**DOB 8(S)**



**DOB 10(S)**



**DOB 12(S)**

TELESCOPES			
MODEL	DOB 8 (S)	DOB 10 (S)	DOB 12 (S)
Optical Design	Parabolic Newtonian Reflector	Parabolic Newtonian Reflector	Parabolic Newtonian Reflector
Clear Aperture	203mm	254mm	305mm
Focal Length;F/Ratio	1200mm;f/5.9	1200mm;f/4.7	1500mm;f/4.9
Maximum Practical Power	406x	508x	610x
Limiting Stellar Magnitude	13.6	14.1	14.5
Resolving Power	0.59 arc sec	0.47 arc sec	0.39 arc sec
Eyepiece Holder Diameter	2"(With a 1.25" adapter)	2"(With a 1.25" adapter)	2"(With a 1.25" adapter)
Tube Dimension (DxL)	238mm x (835mm-1115mm);11kg	380mm x (800mm-1120mm);15kg	450mm x (920mm-1400mm);21kg
Eyepiece	SP10 & SP26	SP10 & SP26	SP10 & SP26
Finder Scope	8x50	8x50	8x50
Mount	Collapsible DOB8"(S)	Collapsible DOB10"(S)	Collapsible DOB12"(S)
Hand Control	\	\	\

# GO-TO DOBSONIANS



**DOB GOTO 8**



**DOB GOTO 10**



**DOB GOTO 12**

TELESOPES			
MODEL	DOB GOTO 8	DOB GOTO 10	DOB GOTO 12
Optical Design	Parabolic Newtonian Reflector	Parabolic Newtonian Reflector	Parabolic Newtonian Reflector
Clear Aperture	203mm	254mm	305mm
Focal Length;F/Ratio	1200mm;f/5.9	1200mm;f/4.7	1500mm;f/4.9
Maximum Practical Power	406x	508x	610x
Limiting Stellar Magnitude	13.6	14.1	14.5
Resolving Power	0.59 arc sec	0.47 arc sec	0.39 arc sec
Eyepiece Holder Diameter	2"(With a 1.25" adapter)	2"(With a 1.25" adapter)	2"(With a 1.25" adapter)
Tube Dimension (DxL)	238mm x (835mm-1115mm);11kg	380mm x (800mm-1120mm);15kg	450mm x (920mm-1400mm);21kg
Eyepiece	SP10 & SP26	SP10 & SP26	SP10 & SP26
Finder Scope	8x50	8x50	8x50
Mount	Collapsible DOB8"(S)	Collapsible DOB10"(S)	Collapsible DOB12"(S)
Hand Control	AZ SynScan	AZ SynScan	AZ SynScan



# SYNSCAN TOUR

**A revolutionary new computerized hand control!**



**PATENT NO.**

ZL200930238540.3

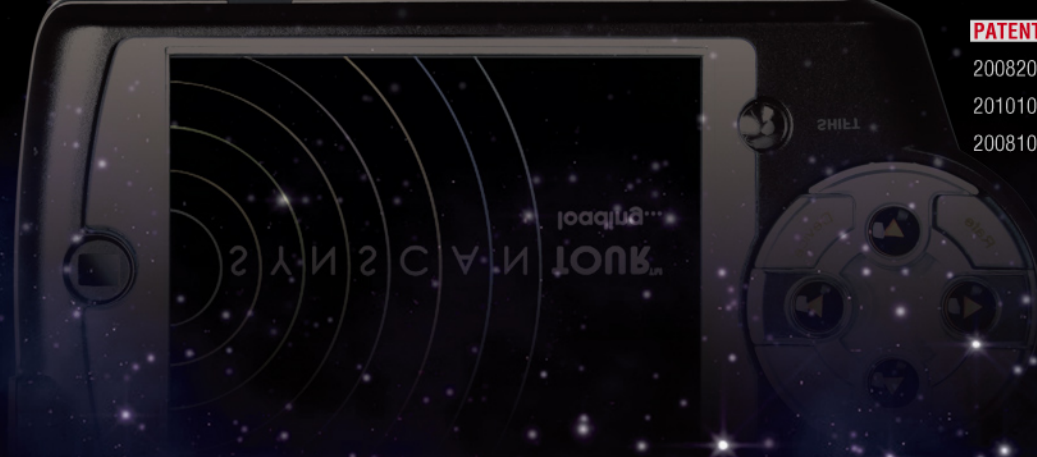
ZL200820180451.8

**PATENT APPLICATION NO.**

200820178045.8

201010105642.X

200810180631.0





## Features

### 1) Celestial object orientation

The SynScan Tour will guide you to find the star or celestial object, if you provide it with the star or celestial object's name or number! It only takes ten seconds!

### 2) The Starry Sky Guide

The menu is dynamically displayed, consisting of the visible, well-known, fascinating list of celestial objects in the current sky for you to explore them one by one.

### 3) Astronomical information in Multimedia

SynScan Tour has built-in basic data for 58,000+ celestial objects, text information, audio commentary, and exquisite photographs of the deep space celestial objects. You can enjoy the mysterious night sky, while checking up on the information on the various celestial objects.

### 4) The Telescope Control

SynScan Tour is a telescope that has a variety of Alt-azimuth or equatorial direct controls, to achieve high-precision auto-star finding feature. Watching the deep-space celestial objects no longer means hard and laborious searching. Within a few hours of a night's observation time, dozens of deep sky celestial objects can be traversed.

### 5) Infrared Sensor

The machine comes with an infrared sensor. When you leave, you can use the machine's stand-by functions, set reminders for people who use the SynScan Tour after, leave a message or layout tasks, etc.

### 6) Bagua and Feng Shui

According to the theory of China's theories of Bagua, the machine is designed with the Bagua feng shui feature. Through your birthday, the five elements Bagua and your good or bad fortune numerology and location can be calculated to point out how you can stay out of trouble.

### 7) Serial port, Mini USB port and Headphone jack

It has a serial port to connect to telescopes and GPS modules, a mini USB port used to connect to computers and a headphone jack used to connect to headphones.

### 8) Other features

It can also provide you with location data, and other recreational functions including playing audio and video files and recording audio.

Main Menu	Sub-Menu	Function
Sky	Sky Hopper	Instant star map and telescope controls
	Encyclopedia	Astronomy information and trivia
Media	Sound	Playback of audio files
	Picture	Browse pictures
	Video	Playback of video files
Tools	Calculator	A simple calculator
Eyepiece Holder Diameter	Notebook	Create and edit notes
	Compass	A numerical compass
Tube Dimension (D x L)	Recorder	A sound recorder
	Feng-Shui Compass	Calculation of Bagua and personal fortune
Lunar Phase		Displays the moonrise, moonset, and twilight times of each day
Setting	System	Backlight, volume, language, touch screen calibration, and display function settings
	Date/Time	System date/time settings
	Location	Setting of current geographical coordinates
	File Manager	Manage file contents of internal, USB, and SD card memories

# SYNGUIDER



The SynGuider can guide an equatorial mount without the help of a computer. It will improve the image quality and help you achieve pin-point stars in you long exposure photography.

## Features

1. stand-alone unit
2. CCD sensor
3. LCD display shows real-time star image
4. ST-4 auto-guiding port
5. M42 and 1.25" telescope port
6. firmware upgradeable via internet

## Specifications

Image Sensor  
Type: SONY ICX404AL CCD Sensor  
Chip Size: 5.59mm(X) \* 4.68mm(Y)  
Number of Effective Pixels: 510(X) \* 492(Y)  
Unit Cell Size: 9.6um(X) \* 7.5um(Y)  
Formula for Angular Resolution in Arc Second:  
Resolution(X) = 2261/FL  
Resolution(Y) = 1962/FL  
FL is the focal length of the guide scope in millimeters.

# GUIDESCOPE MOUNT



Unlike the tradition guidescope holder relying on screws pushing on the body of the tube to hold the guidescope securely, this ultra stable guidescope mount features a dovetail mounting system for quick-release attachment/detachment. Aligning the guidescope to the OTA is easy as the adjustment is by made in two different axes separately controlled by two different knobs. The mount also features a 1/4-20 screw to hold a camera so it can also function as piggyback mount.





# ACCESSORIES

01



## Sky Panorama UWA 82°

The fully multi-coated Sky Panorama eyepieces offer an 82° apparent FOV for high and low magnifications. The retractable eyecups provide ultra-low profile for eyeglass wearers. With the parfocal design, little or no focusing needed when changing from low to high power. Rubber gripping ring is for secure handling and smooth control of eyecup.

Focal Lengths	Apparent Field Of View	Eye-piece Barrels
7mm	82°	1.25"
15mm	82°	1.25"
23mm	82°	2"

02



## Plössl (PL)

Among the most popular designs today, these 4-element plössl eyepieces provide excellent sharpness and impressively high contrast. All seven plössls are fully-coated for maximum light transmission. Ideal for all observing purposes.

Focal Lengths	Apparent Field Of View	Eye-piece Barrels
6.3mm	50°	1.25"
7.5mm	50°	1.25"
10mm	50°	1.25"
12.5mm	50°	1.25"
17mm	50°	1.25"
20mm	50°	1.25"
25mm	50°	1.25"

03



## Super Plössl (SP)

SP series eyepieces set the performance standard for modern telescope oculars. The proven 4-element plössl design delivers edge-to-edge blackened elements, providing the highest contrast images attainable.

Focal Lengths	Apparent Field Of View	Eye-piece Barrels
6.3mm	52°	1.25"
7.5mm	52°	1.25"
10mm	52°	1.25"
12.5mm	52°	1.25"
17mm	52°	1.25"
20mm	52°	1.25"
26mm	52°	2"
32mm	52°	2"
40mm	52°	2"

04



## LET

These eyepieces allow 20mm of eye relief for your viewing comfort even at high power. The rubber eyecups are included to keep out extraneous light. These eyepieces are especially valuable for observers wearing eyeglasses. They provide long enough eye relief to take in the entire field of view when viewing with eyeglasses on.

Focal Lengths	Apparent Field Of View	Eye-piece Barrels
28mm	56°	2"
35mm	56°	2"
42mm	52°	2"

05



## SWA 70°

This high quality, 8-element, multi-format eyepieces feature a clever design allowing it to be adaptable for either 1.25" or 2" eyepiece tube barrels. Threaded for 1.25" filters.

Focal Lengths	Apparent Field Of View	Eye-piece Barrels
5mm	70°	1.25" with a 2" adapter
8mm	70°	1.25" with a 2" adapter
13mm	70°	1.25" with a 2" adapter
17mm	70°	1.25" with a 2" adapter
22mm	70°	2"
32mm	70°	2"

06



## UWA 58°

This series of eyepieces is modified Plössls that have been optimized for planetary observations. They feature long eye relief combined with large exit pupil.

Focal Lengths	Apparent Field Of View	Eye-piece Barrels
2.5mm	58°	1.25"
3.2mm	58°	1.25"
4mm	58°	1.25"
5mm	58°	1.25"
6mm	58°	1.25"
7mm	58°	1.25"
8mm	58°	1.25"
9mm	58°	1.25"
15mm	58°	1.25"
20mm	58°	1.25"
25mm	58°	1.25"

07



## Zoom

These zoom eyepieces provide the benefits of a continuous adjustable power at an affordable price. It allows you to find an object at low power, then zoom in until you reach the desired magnification. The fold-down rubber eyecup provides comfortable viewing for eyeglass wearers.

08



## Flat

Edge-on eyepieces offer premium performance at an amazing price! Flat-field design means sharp focus from the edge to the center of the viewing field. Features multicoated optics, all-black anodizing, twist-up eye guards, and par-focal design. Large eye lens and long eye relief mean comfortable viewing, even for long observing sessions.

09



## Illuminated Reticle Eyepiece

This multi-function guiding eyepiece features a laser-etched double crosshair reticle with a built-in battery illuminator. This 12.5mm eyepiece is multi-coated with an apparent field of view of 40°. Battery is included.

Focal Lengths	Apparent Field Of View	Eye-piece Barrels	Focal Lengths	Apparent Field Of View	Eye-piece Barrels	Focal Lengths	Apparent Field Of View	Eye-piece Barrels
7-21mm	30° - 43°	1.25"	16mm	60°	1.25"	12.5mm	40°	1.25"
8-24mm	40° - 60°	1.25"	19mm	65°	1.25"			
			27mm	53°	1.25"			



## 1.5x Erecting Eyepiece

This 10mm erecting eyepiece can be used on any telescope, refractor or reflector to correct the orientation of the image.

On a refractor: the erecting eyepiece can be used on any refractor, even a short-tube. It works alone without a diagonal. The extension tube is needed only when focus can not be reached by using the erecting eyepiece alone.

On a reflector: with the erecting eyepiece attached to your Newtonian Telescope, images are easily corrected while still maintaining their quality and clarity.

## Collimators



**CEA Collimator**  
Ideal for Refractors



**CE Collimator**  
Ideal for Newtonian Reflectors

## PT5 & PT6 Polar Scope



**PT5** -- suitable for EQ3 & HEQ5 SynScan mounts.  
**PT6** -- suitable for EQ5, EQ6 SynScan & NEQ6 SynScan mounts.

## Flashlights



LED Flashlight



Dual-Beam Flashlight

## Finderscopes



Sun-projection finder



# ACCESSORIES



Red Dot Finderscope  
(With Two Holes In The Bracket)  
Zero magnification pointing tool



Red Dot Finderscope  
(With Two Hole In The Bracket)  
Zero magnification pointing tool  
Not suitable for telescopes without finder scope bracket base



6x24 Finderscope



6x30 Finderscope



8x50 Finderscope



6x30 Right Angle Correct Image Finderscope  
8x50 Right Angle Correct Image Finderscope



6x30 Illuminated Finderscope  
Adjustable intensity illuminator  
8x50 Illuminated Finderscope  
Adjustable intensity illuminator



6x30 Finderscope Die-Casting Mounting Bracket  
8x50 Finderscope Die-Casting Mounting Bracket

## Barlow Lens



Short Barlow Lens (2x)  
2x ED Barlow Lens

## 2"-To-1.25" Adapter



With this adapter, you can use 1.25" eyepieces in any 2" focuser or star diagonal.

## Cooling Accelerator Fan



## Diagonals



1.25" 45° Diagonal



1.25" 45° Erect Image Diagonal



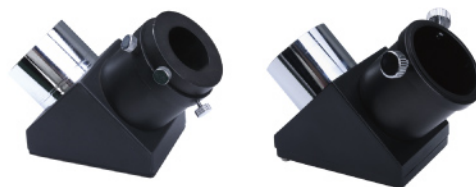
1.25" Dual Angle Diagonal (45° & 90°)



1.25" 90° Diagonal



1.25" 90° Mirror Diagonal

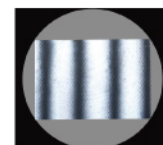


2" 90° Diagonal

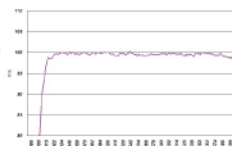
2" 90° Mirror Diagonal



2" Deluxe Dielectric Coated Diagonal



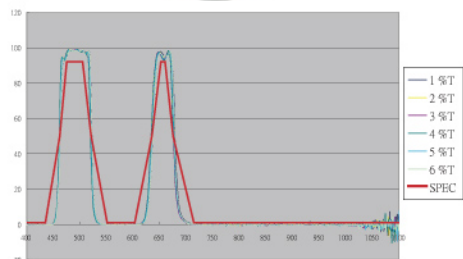
Dielectric Coating



99% Reflectivity

These highest-quality 2" Dielectric Diagonals have undergone a special high-reflectivity multi-coating process, boasting them to reflect 99% of the precious gathered starlight, providing exceptional brightness and contrast. (Standard diagonals typically reflect 90-95% of light). These sophisticated, lab-tested dielectric diagonals are more durable than standard diagonals with enhanced aluminum coatings, so you'll enjoy years of exceptional performance.

## M48 UHC Filter



## Solar Filters



Size available:

76mm, 80mm, 90mm, 102mm, 114mm, 120mm, 127mm, 130mm, 150mm, 180mm, 200mm, 250mm, 300mm

## Color Filters



NO.56, NO.58, NO.25, NO.21, NO.12, NO.80A

## Accessories for Photography



0.85x Focal Reducer  
80/100/120  
For Sky-Watcher black diamond ED80/100/120



2" Coma Corrector  
For F/5 Newtonian Reflectors



Canon/Nikon/Sony M48 T-rings  
Designed for attaching a Canon/Nikon/Sony DSLR camera to any of the Sky-Watcher 0.85x focal reducer/corrector



SLR Camera Mount



Universal Digital-Scoping Adapter

## Foam-Padded Aluminium Carrying Cases



Available for Equinox ED60, Equinox ED80, Equinox ED100, Equinox ED120, BKED80, BKED100, BKED120, 5-Element ED100, 3-Element ED120, 3-Element ED150, EQ3 SynScan mount, EQ5 SynScan mount, HEQ5 SynScan mount, EQ6 SynScan mount and NEQ6 SynScan mount

## 2.6" Dovetail Holder



Suitable for EQ6 mounts

## Counterweights



For EQ1 and EQ2 mounts



For EQ3 and EQ3 SynScan mounts



For EQ5, EQ5 SynScan, HEQ5 SynScan, EQ6 SynScan and NEQ6 SynScan mounts

## Dovetail Bars



120SS-A00-7B  
Suitable for focal length < 500mm  
Refractors and Reflectors



120SS-A00-7  
Suitable for 500mm ≤ focal length < 900mm  
Refractors and Reflectors



150S-0-14  
Suitable for focal length ≥ 900mm  
Refractors and Reflectors



P300-A00-2  
Special for BKP300

## Mounts



Support For HEQ5 SynScan, EQ6 SynScan & NEQ6 SynScan Mounts

## Extension Tubes



HEQ5 SynScan Extension Tube



EQ6 SynScan & NEQ6 SynScan Extension Tube



# ACCESSORIES

## Motor Drives



Focus Drive



Economical Tracking Motor  
For EQ1 & EQ2  
9-Volt Alkaline battery included



EQ1 Single Axis DC  
Drive System



EQ2 Single Axis DC  
Drive System



EQ3 Single Axis DC  
Drive System



EQ3 Dual Axis DC  
Drive System



EQ5 Single Axis DC  
Drive System



EQ5 Dual Axis DC  
Drive System



EQ6 Syntrek Upgrade Kit



EQ6 Synscan Upgrade Kit



EQ3 Synscan Upgrade Kit

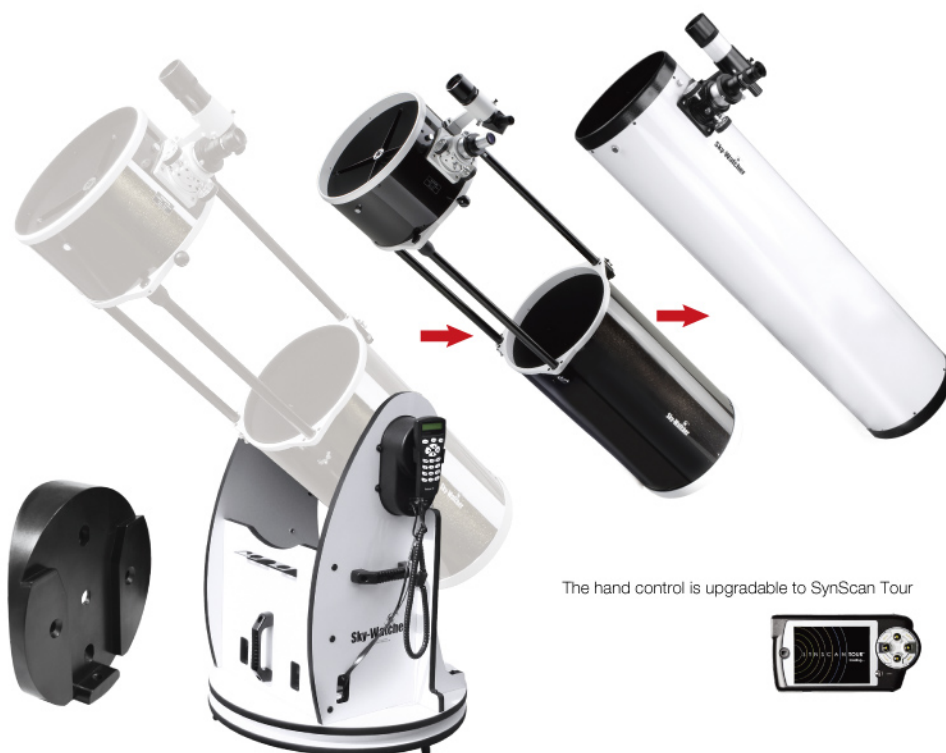


EQ5 Synscan Upgrade Kit

## DOB GoTo Upgraded Kits

We are very excited to announce that with the DOB GoTo upgraded kits (the round base and mounting platform), all Sky-Watcher Dobsonians are able to upgrade to realize Go-To function.

Available Sizes: 8", 10" , 12"



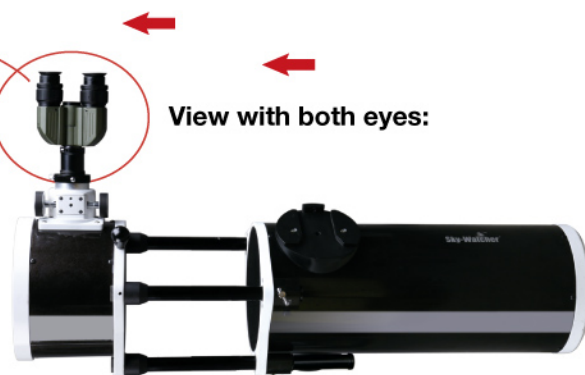
The hand control is upgradable to SynScan Tour



## Binocular Viewer

The Binocular Viewer allows you to adapt two eyepieces to your telescope and view with both eyes simultaneously. In addition to eliminating eye fatigue associated with viewing through one eye for a prolonged period of time, this bino viewer also provides a three dimensional effect while observing many celestial objects.

The Binocular Viewer requires you use two eyepieces of equal focal lengths and optical design.



# DOB

*A portable astronomical observatory is born!*

*Available Sizes: 8", 10", 12", 14", 16"*





# Sky-Watcher

Suzhou Synta Optical Technology Co., Ltd.  
Add: No.65 Yushan Road New District Suzhou China  
Phone: +86-512-68088326 Fax: +86-512-68091278  
E-mail: synta@vip.sina.com



*Galaxy Scientific*  
**www.Astro.hk**